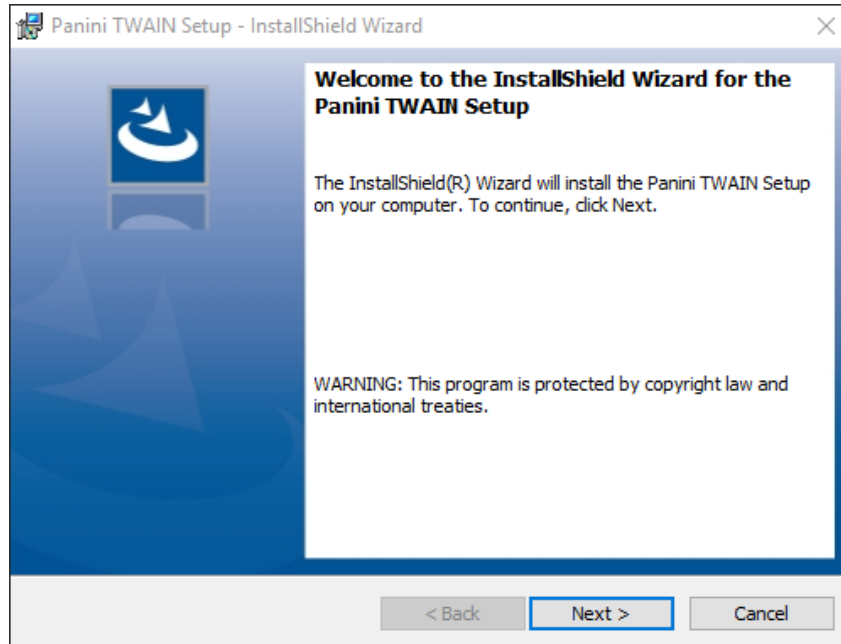


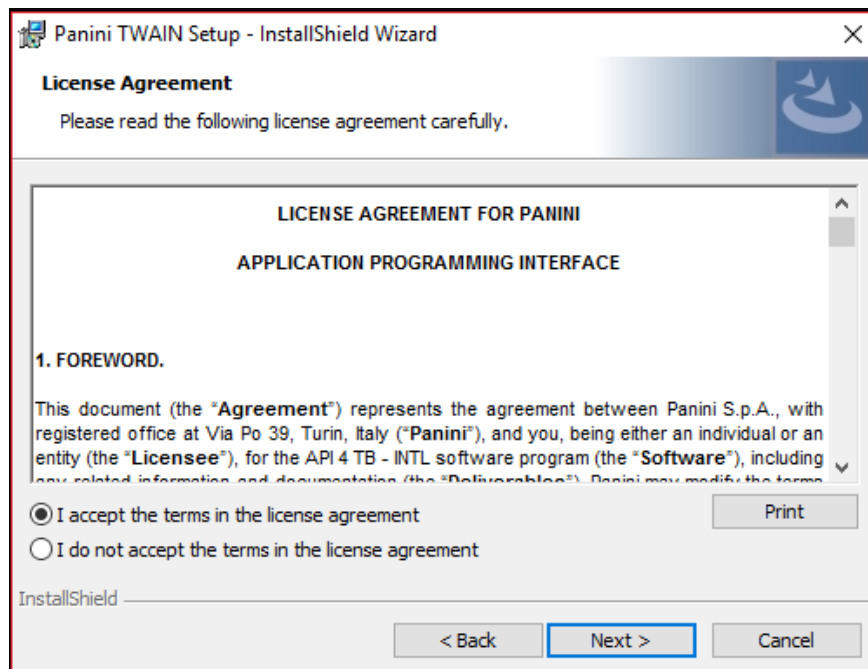


## Panini TWAIN Interface Setup

1. Once you have downloaded the **Panini TWAIN Setup.exe** to your Desktop, double-click the executable to begin the software installation process.  
Click **Next** to start the TWAIN setup.



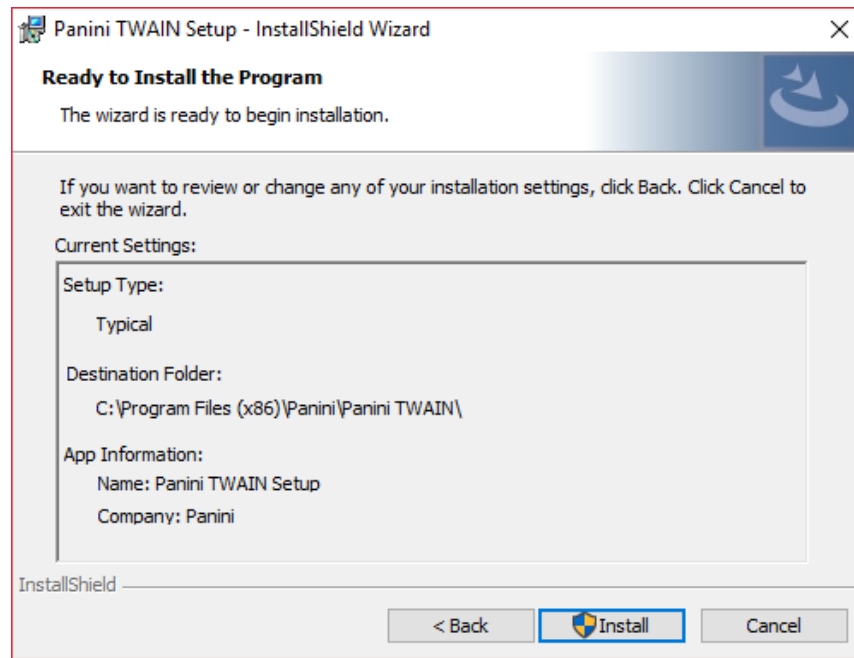
2. Select 'Accept' and click **Next**.



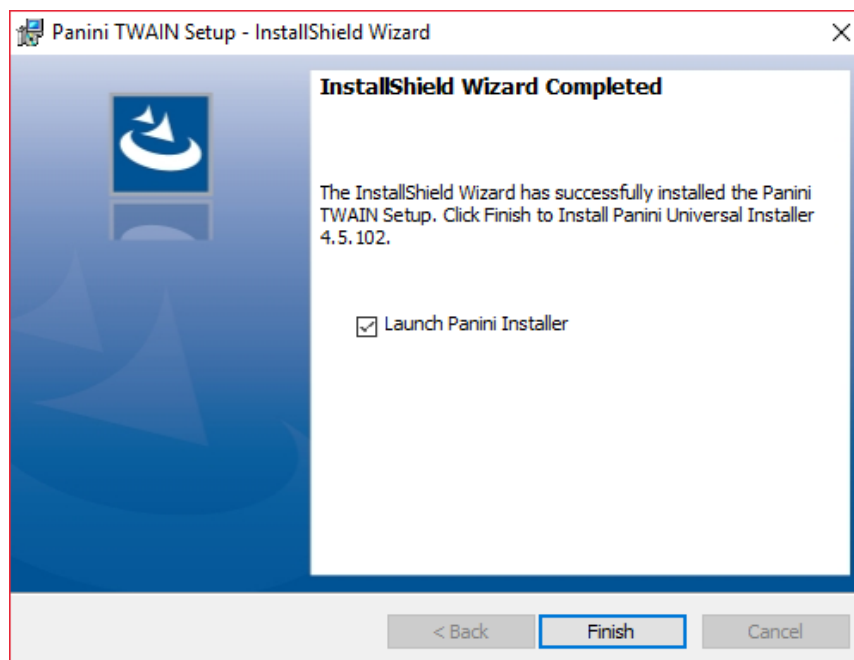


## Panini TWAIN Interface Setup

3. The default installation location for the setup will be displayed. Click **Install** to begin.



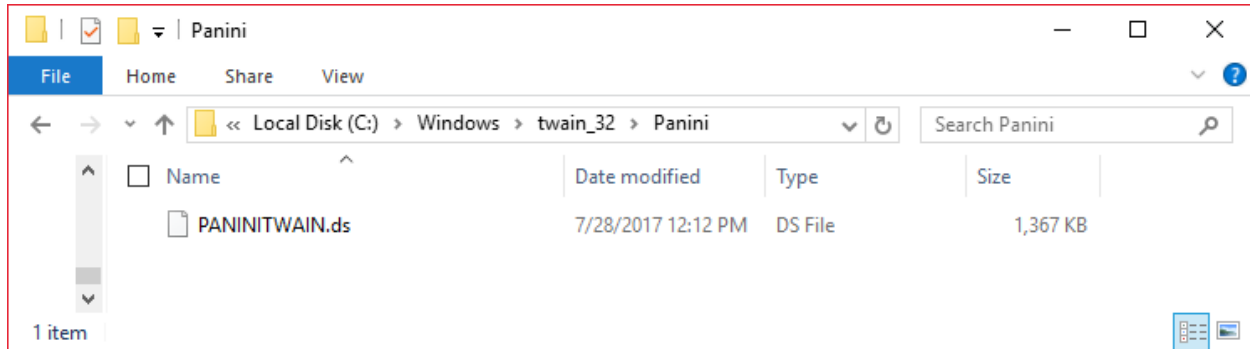
4. Check '**Launch Panini Installer**' to begin the installation of the Panini API and drivers. Click **Finish** to start.





## Panini TWAIN Interface Setup

5. Once the installation for the Panini TWAIN Interface Setup has completed and all dialogs have closed, you can verify the Panini TWAIN driver was successfully loaded. See below.



6. Upon completion of the InstallShield wizard, you should now be able to see 'Panini TWAIN Interface' added to the list of your TWAIN sources in your TWAIN application.
7. The Panini scanner can also be tested outside of the TWAIN application by using the Panini MultiDemo application loaded during setup. A shortcut will be created on the user desktop after completion, as well.

